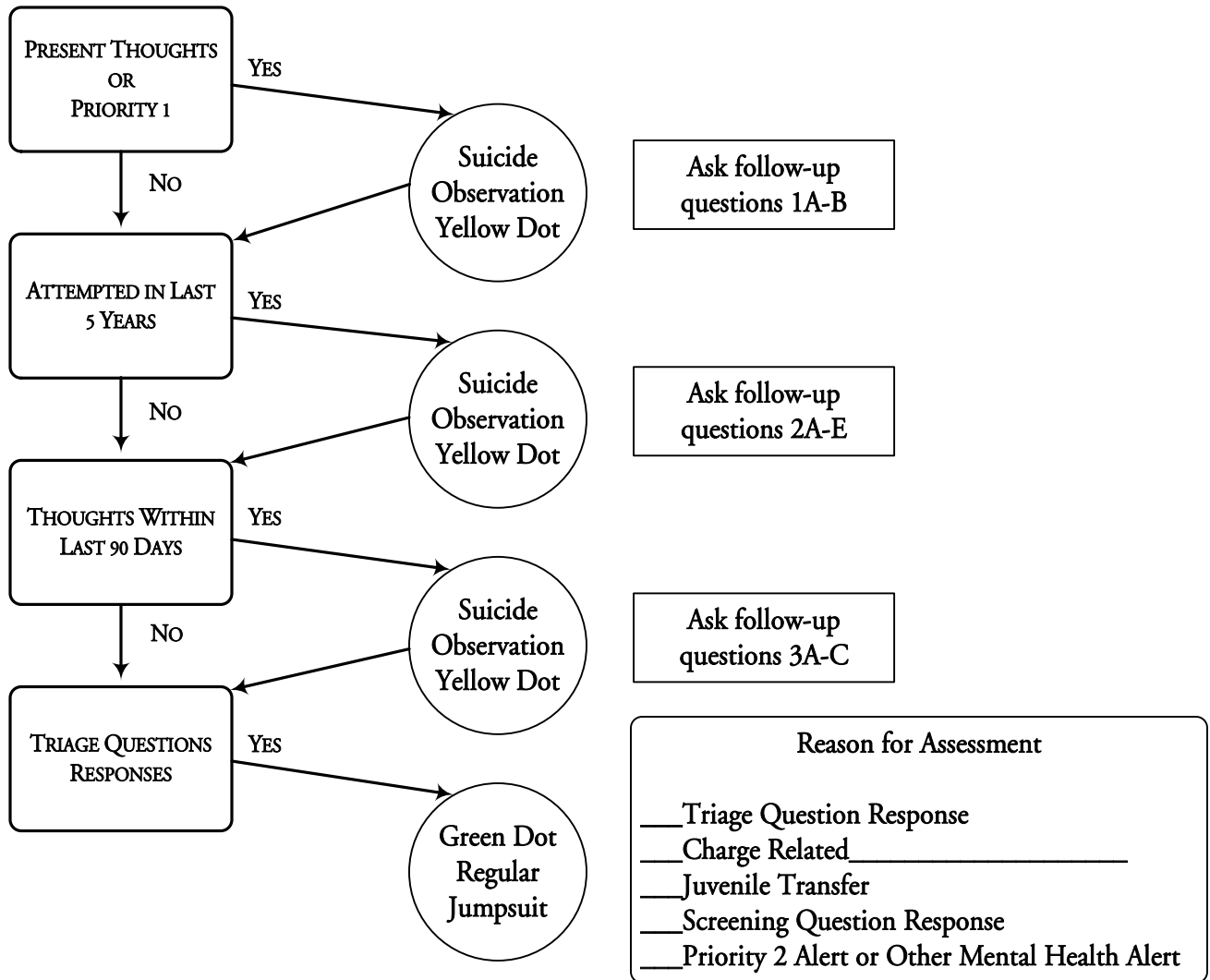


LEXINGTON-FAYETTE URBAN COUNTY DIVISION OF COMMUNITY CORRECTIONS
ADULT AND JUVENILE DETENTION BUREAUS

MENTAL HEALTH & SUICIDAL BEHAVIOR ASSESSMENT DECISION TREE

SUBJECT'S NAME (L,F,M)					
SSN:	AGE:	SEX:	RACE:	DOB:	/ /
CLASSIFIED AS:	HOUSING ASSIGNMENT:		TIME:	DATE: / /	
IMIS REPORT CATEGORY(S):	1.	2.	3.	4.	OFFICER:

Suicidal Behavior Assessment



Comment/Overrides

Data Dictionary
Mental Health/Suicidal Behavior Decision Tree

(Revised: 30 December 1998)

This dictionary provides the working definition for each of the data elements of the Mental Health/Suicidal Behavior Decision Tree.

ARRESTEE INFORMATION - Identifying information on the arrestee.

1. **DATA ELEMENT** – *Subject’s Name (L, F, M)*
SOURCE – Arrest Citation/Booking Index
DEFINITION – Legal name given at time of booking.

2. **DATA ELEMENT** – *Social Security Number*
SOURCE – Arrest Citation/Booking Index
DEFINITION – Social Security Number as given by arrestee at time of booking.

3. **DATA ELEMENT** – *Age*
SOURCE – Arrest Citation/Booking Index
DEFINITION – Age of arrestee at time of booking.

4. **DATA ELEMENT** – *Sex*
SOURCE – Arrest Citation/Booking Index
DEFINITION – Gender of arrestee at time of booking.
 - Male
 - Female

5. **DATA ELEMENT** – *Race*
SOURCE – Arrest Citation/Booking Index
DEFINITION – Race of arrestee at time of Booking.
 - **A** – Asian or Pacific Islander
 - **I** – American Indian or Alaskan Native
 - **B** – Black
 - **W** – White
 - **H** – Hispanic
 - **U** – Unknown

6. **DATA ELEMENT** – *Date of Birth (DOB)*
SOURCE – Arrest Citation/Booking Index
DEFINITION – Date of Birth as given by the arrestee at time of booking.

7. **DATA ELEMENT** – *Current Housing Assignment*
SOURCE – Commander self report.
DEFINITION – Arrestee’s current housing assignment.
 - Booking
 - 1H – 1st floor holdover
 - Intake

8. **DATA ELEMENT** – *Incident Location*
SOURCE – Commander self report.
DEFINITION – Location where incident/interview was conducted.
9. **DATA ELEMENT** – *Relocated to*
SOURCE – Commander self report.
DEFINITION – Pod/Housing Assignment arrestee is given following Mental Health/Suicidal Behavior interview.
 - AC – Assessment Center
 - 2H – 2nd Floor Holdover
10. **DATA ELEMENT** - *Subject's Classification*
SOURCE - Based on the results of running the decision tree and any overrides.
DEFINITION - This is the results of the Decision Tree Classification Instrument, Program Eligibility Decision Tree and any overrides of the Decision Tree. The classification is expressed in a Custody Classification (SS- for Special Segregation or GH for General Housing) and a Security Classification (MX for maximum, ME for medium, GP for general population, and MI for minimum). Special Segregation (SS-) includes a designation for the type of Special Segregation status: SS-MD for Medical, SS-MH for Mental Health, SS-BP for Institutional Behavior Problems, SS-CH for Criminal History, and SS-PC for Protective Custody.
11. **DATA ELEMENT** – *Officer*
SOURCE – Commander self report.
DEFINITION – Name of Commander conducting the interview.
12. **DATA ELEMENT** – *Inmate Management Information System (IMIS) Report Category(s)*
SOURCE – Inmate Management Information System (IMIS), Classification Data Base, Institutional Behavior Report Categories
DEFINITION – Data base coding assigned to all institutional incidents including any classification unit activities. All incidents are grouped into similar categories and codified for entry into the database. The database is used for tracking of inmate behavior, classification activities, institutional/staff incidents and for the generation of reports.
13. **DATA ELEMENT** – *Date*
SOURCE – Calendar – MM/DD/YY
DEFINITION – Calendar date.
14. **DATA ELEMENT** – *Time*
SOURCE – Clock - ##### hrs (24 hour time)
DEFINITION – Clock time interview is conducted.

SUICIDE ASSESSMENT - Identifying the arrestees that are at risk for suicide and those that may need to see Mental Health staff for other mental health reasons.

1. **DATA ELEMENT** – *Present Thoughts/Priority One*

SOURCE – Arrestee self-report, Shift Commander/Officer observation, outside sources, alert file activated

DEFINITION –

- **Present Thoughts** - Arrestee has thought about or had suicidal gestures since arrest.
- **Priority One** – Existing suicide alert flag in IMIS system

2. **DATA ELEMENT** – *Attempt within last 5 years*

SOURCE – Arrestee self-report, institutional records, outside sources.

DEFINITION – Arrestee has made an attempt at suicide within the last five years where medical treatment was necessary.

3. **DATA ELEMENT** – *Thoughts within the last 90 days*

SOURCE – Arrestee self-report, institutional records, outside sources

DEFINITION – Arrestee has had thoughts of suicide within the last 90 days or physical action with no medical attention needed within the last year.

4. **DATA ELEMENT** – *Triage Responses*

SOURCE – Arrestee self-report, institutional records, outside sources, current criminal charge

DEFINITION - Any of the following conditions that would generate the use of the Mental Health/Suicidal Behavior Decision Tree (Check one or all that apply.)

- **Triage Questions** - Positive response to triage questions
- **Charge Related** – Mandatory assessment due to criminal charge (Note the charge)
- **Juvenile Transfer** - Mandatory assessment due to being a transfer from the Juvenile Detention Center
- **Screening Questions** - Positive response to booking screening questions
- **Priority 2/Other Mental Health Flag** – Existing Suicidal or mental health alert flag in the IMIS database.

5. **DATA ELEMENT** – *Yellow Dot*

SOURCE – Recommendation of Mental Health staff (Comp Care)

DEFINITION – Type of observations and property arrestee will be allowed.

a. **Adult Detention Center**

- Suicide observations
- Lock in
- Lower level Assessment Center cell
- One mattress
- Paper jumpsuit
- Foam shoes
- Finger foods
- Supervised shower.

b. **Juvenile Detention Center**

- Direct supervision suicide observations
- Red T-shirt in intake
- No property restrictions

6. **DATA ELEMENT** – *Green Dot*

SOURCE – Recommendation of Mental Health staff (Comp Care)

DEFINITION – Type of observations and property arrestee will be allowed.

a. **Adult Detention Center**

- Direct Supervision
- Lower level cell
- No property restrictions

b. **Juvenile Detention Center**

- Direct Supervision
- No property restrictions

7. **DATA ELEMENT** – *Comments/Overrides*

SOURCE – Commander self-report/observations.

DEFINITION- Section in which Commander can provide comments and/or reasons for overriding the Mental Health/Suicidal Behavior Decision Tree results.

8. **DATA ELEMENT** – *Follow Up Questions*

SOURCE – Mental Health/Suicidal Behavior Decision Tree, answers given by arrestee

DEFINITION – Questions asked of arrestee to aid Mental Health staff (Comp Care) in follow-up evaluation.

1. Questions asked when arrestee answers yes to having *Present Thoughts* of suicide or has a suicide alert for *Priority One* suicide risk.
 - a. How are you thinking about harming yourself now?
 - b. Why?
2. Questions asked when arrestee answers yes to having *Attempted in the Last 5 years*.
 - a. How did you harm yourself?
 - b. Why?
 - c. Where were you?
 - d. When?
 - e. What kind of medical treatment did you receive?
3. Questions asked when arrestee answers yes to having *Thoughts Within the last 90 days*.
 - a. What happened to trigger your thoughts?
 - b. What was your plan?
 - c. Why didn't you act on your thoughts?

9. **DATA ELEMENT** – *Observations*

SOURCE – Commander observations

DEFINITION – Indications of Substance Abuse as observed by Commander.

- Red eyes
- Slurred Speech
- Odor of Alcohol on breath
- Odor of Paint/Glue

- Unsteady
- Confused/Disoriented
- Other

